

Official Statistics
Game Four
Southern vs. Rowan County

30th Girls'

OFFICIAL NCAA BASKETBALL BOX SCORE: *** FINAL ***

Date: 03-20-91 Site:Frankfort, Ky.

VISITORS (Last Name, First)

NO.	ROWAN COUNTY	Tot FG		3-POINT		FT	FTA	Rebounds			PF	TP			A	TO	BLK	S	TIME	
		FG	FGA	FG	FGA			OFF	DEF	TOT										
24	Glover, Letisha	2	8	0	2	2	4	1	0	1	2	6			2	2	0	5	30:36	
55	Pierce, Amy	3	5	0	0	1	2	1	1	2	1	7			1	7	0	0	30:36	
50	Martin, Heather	2	8	0	0	0	2	7	5	12	1	4			1	3	0	0	30:36	
12	Prince, Becky	3	9	1	5	2	2	1	1	2	3	9			1	5	0	1	30:36	
22	Prince, Beth	3	8	0	0	3	5	2	2	4	4	9			3	6	0	0	22:03	
40	Russell, Ann	0	1	0	0	0	0	0	1	1	2	0			0	0	0	0	8:33	
25	McGhee, Missy	0	1	0	0	0	0	0	1	1	0	0			0	0	0	0	1:24	
54	Cassity, Connie	0	0	0	0	0	0	0	0	0	0	0			0	0	0	0	1:24	
34	Hall, Monica	0	0	0	0	0	0	0	0	0	0	0			0	0	0	0	1:10	
23	Kegley, Amy	0	0	0	0	0	0	0	0	0	1	0			0	0	0	0	1:10	
53	Kash, April	0	0	0	0	0	0	0	0	0	0	0			0	0	0	0	0:47	
35	Taylor, Michelle	0	0	0	0	0	0	0	0	0	0	0			0	0	0	0	1:05	
TEAM REBOUNDS (INCLUDED IN TOTALS)																				
TOTALS		13	40	1	7	8	15	12	11	23	14	35			8	23	0	6	160	

TOTAL FG 1st HALF 3/15 20.0% 2nd HALF 10/25 40.0% GAME 13/40 32.5% DEADBALL
 3-POINT FG 1st HALF 0/2 0.0% 2nd HALF 1/5 20.0% GAME 1/7 14.3% REBOUNDS 3
 FREE THROWS 1st HALF 1/2 50.0% 2nd HALF 7/13 53.8% GAME 8/15 53.3%

HOME (Last Name, First)

NO.	SOUTHERN	Tot FG		3-POINT		FT	FTA	Rebounds			PF	TP			A	TO	BLK	S	TIME	
		FG	FGA	FG	FGA			OFF	DEF	TOT										
34	Carter, Lisa	4	5	0	0	0	0	0	4	4	2	8			0	0	0	3	19:42	
55	Bleuel, Alicia	9	12	0	0	5	6	1	5	6	1	23			3	3	0	2	25:50	
23	Allen, Sharonda	3	8	0	0	0	0	2	6	8	1	6			0	1	0	0	25:07	
12	Burden, Danielle	4	5	0	1	0	0	0	0	0	3	8			8	5	0	3	27:31	
22	Schaber, Christy	3	5	0	0	0	2	1	1	2	0	6			2	1	0	1	20:14	
35	Smith, Angie	3	4	0	0	0	0	2	2	4	2	6			0	1	0	0	12:43	
05	Rains, April	2	4	0	1	1	1	0	0	0	2	5			2	3	0	3	17:22	
32	Fante, Melissa	0	2	0	0	0	0	0	1	1	2	0			0	0	0	0	3:50	
21	McCaulley, Becky	0	1	0	0	0	0	0	0	0	0	0			0	0	0	0	2:01	
10	Johnson, Malinda	0	0	0	0	0	0	0	0	0	1	0			1	0	0	0	1:47	
15	Alvey, Amy	1	2	0	0	0	2	1	0	1	0	2			0	0	0	0	1:24	
31	Landrum, Debbie	0	0	0	0	0	0	0	0	0	0	0			0	0	0	0	1:24	
20	Basham, Sandi	0	0	0	0	0	0	0	0	0	0	0			0	0	0	0	1:05	
TEAM REBOUNDS (INCLUDED IN TOTALS)																				
TOTALS		29	48	0	2	6	11	8	20	28	14	64			16	15	0	12	160	

TOTAL FG 1st HALF 7/11 63.6% 2nd HALF 22/37 59.5% GAME 29/48 60.4% DEADBALL
 3-POINT FG 1st HALF 0/0 0.0% 2nd HALF 0/2 0.0% GAME 0/2 0.0% REBOUNDS 4
 FREE THROWS 1st HALF 1/3 33.3% 2nd HALF 5/8 62.5% GAME 6/11 54.5%

OFFICIALS: Glenn Brown, Mickey Allen, D. Campbell-Alt
 Technicals: None

SCORE BY PERIODS

ROWAN COUNTY	7	12	4	12	=	35
SOUTHERN	15	15	16	18	=	64

Attendance: 3,165

COMMENTS: POINTS OFF TURNOVERS

ROWAN COUNTY 11 SOUTHERN 28 ROWAN COUNTY

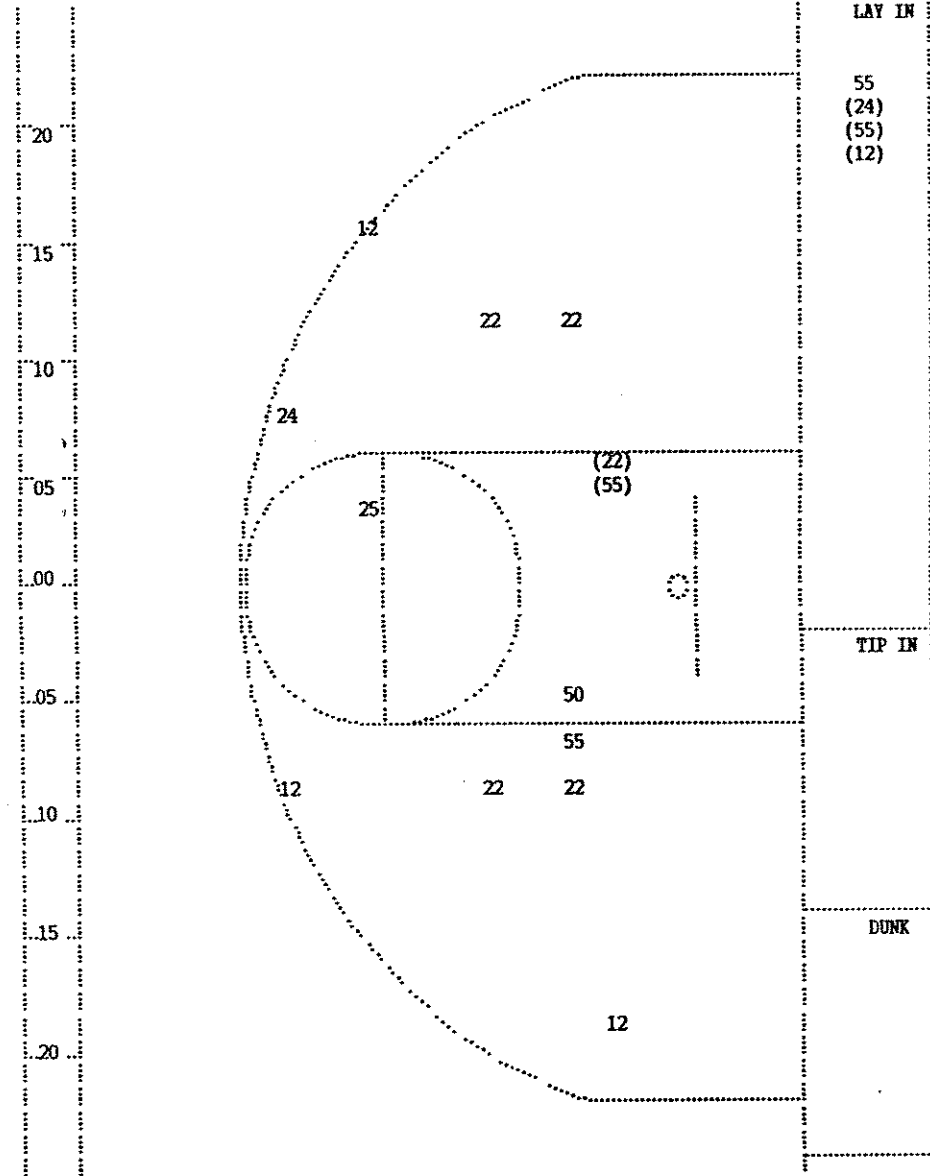
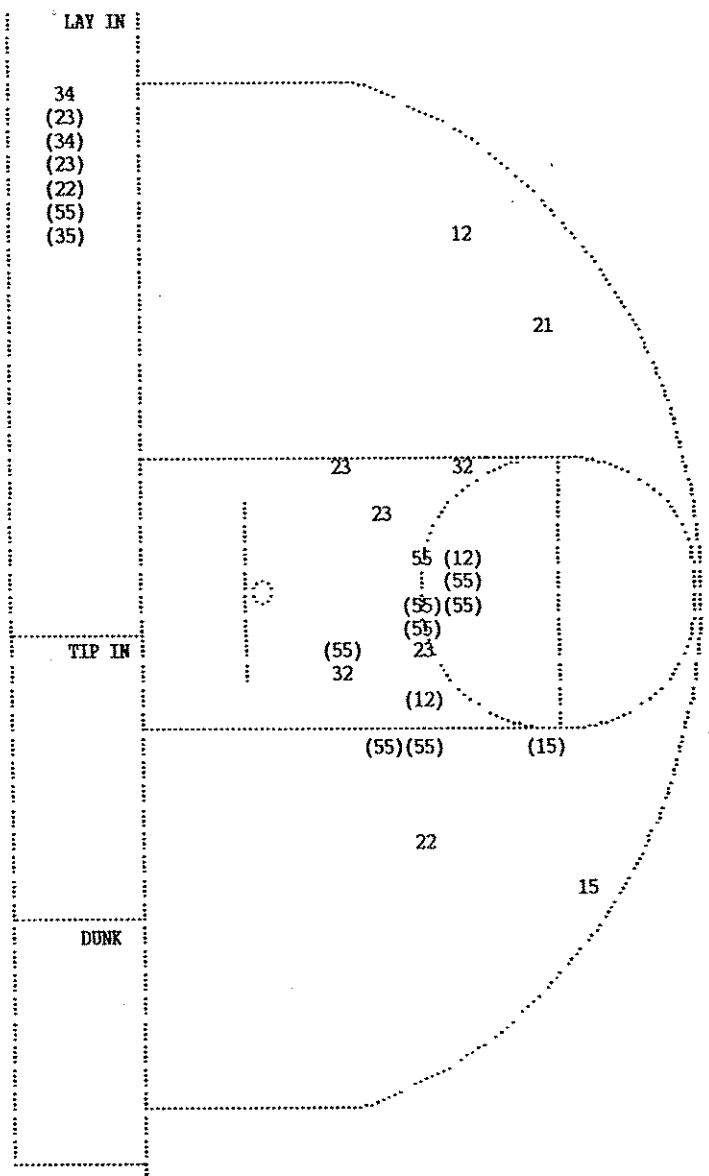
SECOND CHANCE POINTS
 4 SOUTHERN

Player				Team	SOUTHERN	Time	Score	ROWAN COUNTY	Player				Team	
Burden,Danielle,Schaber,Christy,Allen,Sharonda,Smith,Angie,Bleuel,Alicia					Ball to Lady Trojans					Glover,Letisha,Pierce,Amy,Martin,Heather,Prince,Becky,Prince,Beth				
1-1	100%	1-1	100%		Driving Layup by Allen,Sharonda	4	7:48	*48-23						
1				1	Foul on Smith,Angie	4	7:37							
1-1	100%	2-2	100%		7 ft Left Side Bank by Bleuel,Alicia	4	6:46	*50-23						
1				1	Assist by Schaber,Christy									
				1	Sub In: Rains, April Out: Burden,Danielle	4	6:32							
				1	Foul on Rains, April	4	6:24							
				1	3 Second Lane Violation on Bleuel,Alicia	4	5:58							
				1	Steal by Bleuel,Alicia	4	5:44							
						4	5:43		Bad Pass by Pierce,Amy		1		1	
1-1	100%	3-3	100%		Driving Layup by Schaber,Christy	4	5:21	*52-23						
1				2	Assist by Bleuel,Alicia									
				1	Steal by Rains, April	4	5:04		Bad Pass by Prince,Becky		1		2	
						4	4:53							
2-2	100%	4-4	100%		8 ft Left Angle Jump shot by Bleuel,Alicia	4	4:50	*54-23						
						4	4:29	54-25*	Follow Layup by Pierce,Amy		1-1	100%	1-5	20.0%
						4	4:12		Steal by Prince,Becky		1			1
				1	Dribbling Error on Rains, April	4	4:11							
				2	Traveling Violation on Rains, April	4	4:09	54-27*	Fast Break Layup by Prince,Becky		1-2	50.0%	2-6	33.3%
					Sub In: Fante,Melissa Out: Allen,Sharonda	4	3:51							
					Sub In: Burden,Danielle Out: Rains, April	4	3:50							
				1	Foul on Fante,Melissa	4	3:42	54-29*	6 ft Left Side Driving by Prince,Beth		1-3	33.3%	3-7	42.8%
						4	3:42							
						4	3:41	54-30*	Prince,Beth, 1 Free Throw made		1-1	100%	1-1	100%
3-3	100%	5-5	100%		6 ft Lane Turnaround by Bleuel,Alicia	4	3:25	*56-30						
1				3	Assist by Burden,Danielle									
					Sub In: McCaulley,Becky Out: Smith,Angie	4	3:06		Out-of-Bounds by Martin,Heather		1			3
						4	3:06							
				1	Steal by Schaber,Christy	4	3:04		Foul on Martin,Heather		1			1
						4	2:45							
						4	2:43		Dribbling Error on Prince,Beth		1			4
4-4	100%	6-7	85.7%		6 ft Lane Turnaround by Bleuel,Alicia	4	2:33	*58-30						
2				4	Assist by Burden,Danielle									
						4	2:24	58-32*	6 ft Left Side Jump shot by Pierce,Amy		2-2	100%	4-8	50.0%
									Assist by Prince,Beth		1			1
5-5	100%	7-8	87.5%		Driving Layup by Bleuel,Alicia	4	1:55	*60-32						
3				5	Assist by Burden,Danielle									
2				4	Foul on Fante,Melissa	4	1:47							
					Sub In: Johnson,Malinda Out: Burden,Danielle	4	1:47							
					Sub In: Smith,Angie Out: Bleuel,Alicia	4	1:47							
1-1	100%	8-10	80.0%		Follow Layup by Smith,Angie	4	1:47	60-33*	Prince,Beth, 2 Free Throws made 1st missed 2nd		2-3	66.6%	2-3	66.6%
1				5	Foul on Johnson,Malinda	4	1:29	*62-33						
					Sub In: Alvey,Amy Out: Schaber,Christy	4	1:24							
					Sub In: Landrum,Debbie Out: Smith,Angie	4	1:24							
						4	1:24		Subs In: McGhee,Missy,Cassity,Connie,Hall,Monica,Kegley,Amy					
						4	1:24		Out: Prince,Beth,Glover,Letisha,Martin,Heather,Pierce,Amy					
						4	1:24	62-35*	Prince,Becky, 2 Free Throws made both		2-2	100%	4-5	80.0%
						4	1:24		Sub In: Kash,April Out: Prince,Becky					
						4	1:05		Foul on Kegley,Amy		1			2
						4	1:05							
					Sub In: Basham,Sandi Out: McCaulley,Becky	4	1:05		Sub In: Taylor,Michelle Out: Kash,April					
						4	1:05							
0-2	00.0%	0-2	00.0%		Alvey,Amy, 2 Free Throws missed both	4	:28.2		Sub In: Kash,April Out: Kegley,Amy					
						4	:14.7		Sub In: Kegley,Amy Out: Hall,Monica					

2nd Half Play by Play (continued)

Player				Team	SOUTHERN	Time	Score	ROWAN COUNTY	Player				Team
1-2	50.0%	9-13	69.2%		13 ft Left Angle Jump shot by Alvey,Amy	4	:14.6	*64-35					
1				6	Assist by Johnson,Malinda								

Player	Team	SOUTHERN	Time	Score	ROWAN COUNTY	Player	Team
Rains, April, Burden, Danielle, Allen, Sharonda, Carter, Lisa, Bleuel, Alicia			Glover, Letisha, Pierce, Amy, Martin, Heather, Prince, Becky, Prince, Beth				
Ball to Lady Trojans							
1-1	100%	1-1	100%	8 ft Lane Jump shot by Burden, Danielle	3 7:47	*32-19	
1		1		Steal by Rains, April	3 7:11		
					3 7:09		
					3 6:56	*34-19	
1-1	100%	2-3	66.6%	8 ft Lane Turnaround by Bleuel, Alicia	3 6:20		
1		1		Assist by Burden, Danielle	3 6:19		
1		2		Steal by Bleuel, Alicia	3 6:17		
					3 6:17	*36-19	
2-2	100%	2-2	100%	Bleuel, Alicia, 2 Free Throws made both	3 6:09		
					3 5:54	*38-19	
2-2	100%	3-4	75.0%	3 ft Lane Turnaround by Bleuel, Alicia	3 5:37		
2		2		Assist by Burden, Danielle	3 5:35		
					3 5:33		
1		1		Bad Pass by Bleuel, Alicia	3 5:22		
					3 4:29		
1		2		Bad Pass by Burden, Danielle	3 4:21		
					3 4:05	*40-19	
3-3	100%	4-5	80.0%	8 ft Lane Turnaround by Bleuel, Alicia	3 3:45		
3		3		Assist by Burden, Danielle	3 3:45		
1		1		Foul on Bleuel, Alicia	3 3:45	40-20*	Prince, Beth, 2 Free Throws made 1st missed 2nd
				Sub In: Schaber, Christy Out: Rains, April	3 3:32		Foul on Prince, Beth
					3 3:18	40-22*	Fast Break Layup by Glover, Letisha
							Assist by Prince, Becky
1		2		Foul on Burden, Danielle	3 2:56		
					3 2:56		Sub In: Russell, Ann Out: Prince, Beth
					3 2:56	40-23*	Glover, Letisha, 2 Free Throws made 1st missed 2nd
1-2	50.0%	5-10	50.0%	Jump shot Layup by Allen, Sharonda	3 2:43	*42-23	
					3 2:32		Foul on Glover, Letisha
					3 2:32		Other Glover, Letisha
2-3	66.6%	6-11	54.5%	7 ft Lane Driving by Burden, Danielle	3 2:04	*44-23	
1		3		Steal by Carter, Lisa	3 1:20		
					3 1:19		Bad Pass by Pierce, Amy
1-2	50.0%	7-13	53.8%	Reverse Lay Up Layup by Carter, Lisa	3 1:16	*46-23	
2		3		Bad Pass by Burden, Danielle	3 :46.4		
				Sub In: Smith, Angie Out: Bleuel, Alicia	3 :45.8		
1		3		Foul on Allen, Sharonda	3 :19.7		



SOUTHERN				
Player		Player		Player
34 - Carter, Li	1 / 2 50.0%	15 - Alvey, Amy	1 / 2 50.0%	
55 - Bleuel, Al	8 / 9 88.8%	21 - McCaulley,	0 / 1 0.0%	
23 - Allen, Sha	2 / 5 40.0%	32 - Fante, Mel	0 / 2 0.0%	
12 - Burden, Dan	2 / 3 66.6%	35 - Smith, Ang	1 / 1 100.0%	
22 - Schaber, Ch	1 / 2 50.0%			
Layups	1-9 Ft	10-15 Ft	Over 15 Ft	3 Pointers Total
6 / 7	9 / 14	1 / 3	0 / 2	0 / 1 16 / 27
85.7%	64.3%	33.3%	0.0%	0.0% 59.3%

ROWAN COUNTY				
Player		Player		Player
24 - Glover, Le	1 / 2 50.0%	25 - McGhee, Mi	0 / 1 0.0%	
55 - Pierce, Am	2 / 4 50.0%			
50 - Martin, He	0 / 1 0.0%			
12 - Prince, Be	1 / 4 25.0%			
22 - Prince, Be	1 / 5 20.0%			
Layups	1-9 Ft	10-15 Ft	Over 15 Ft	3 Pointers Total
3 / 4	2 / 5	0 / 4	0 / 1	0 / 3 5 / 17
75.0%	40.0%	0.0%	0.0%	0.0% 29.4%

OFFICIAL NCAA BASKETBALL BOX SCORE: * OFFICIAL FIRST HALF *

Date: 03-20-91 Site:Frankfort, Ky.

VISITORS (Last Name, First)

NO.	ROWAN COUNTY	Tot FG		3-POINT		FT	FTA	Rebounds			PF	TP	A	TO	BLK	S	TIME
		FG	FGA	FG	FGA			OFF	DEF	TOT							
24	Glover, Letisha	1	6	0	1	1	2	1	0	1	0	3	2	1	0	4	16:00
55	Pierce, Amy	1	1	0	0	1	2	0	0	0	1	3	1	5	0	0	16:00
50	Martin, Heather	2	7	0	0	0	2	6	3	9	0	4	1	1	0	0	16:00
12	Prince, Becky	2	5	1	3	0	0	1	0	1	1	5	0	2	0	0	16:00
22	Prince, Beth	2	3	0	0	0	0	2	1	3	3	4	2	4	0	0	10:23
40	Russell, Ann	0	1	0	0	0	0	0	0	0	2	0	0	0	0	0	5:37
TEAM REBOUNDS (INCLUDED IN TOTALS)																	
TOTALS		8	23	1	4	2	6	10	4	14	7	19	6	13	0	4	80

TOTAL FG 1st HALF 3/15 20.0% 2nd HALF 5/8 62.5% GAME 8/23 34.8% DEADBALL
 3-POINT FG 1st HALF 0/2 0.0% 2nd HALF 1/2 50.0% GAME 1/4 25.0% REBOUNDS 2
 FREE THROWS 1st HALF 1/2 50.0% 2nd HALF 1/4 25.0% GAME 2/6 33.3%

HOME (Last Name, First)

NO.	SOUTHERN	Tot FG		3-POINT		FT	FTA	Rebounds			PF	TP	A	TO	BLK	S	TIME
		FG	FGA	FG	FGA			OFF	DEF	TOT							
34	Carter, Lisa	3	3	0	0	0	0	0	1	1	2	6	0	0	0	2	11:42
55	Bleuel, Alicia	1	3	0	0	3	4	1	3	4	0	5	2	1	0	0	12:22
23	Allen, Sharonda	1	3	0	0	0	0	1	2	3	0	2	0	1	0	0	12:57
12	Burden, Danielle	2	2	0	0	0	0	0	0	0	2	4	2	3	0	3	16:00
22	Schaber, Christy	2	3	0	0	0	2	1	0	1	0	4	1	1	0	0	9:53
35	Smith, Angie	2	3	0	0	0	0	1	2	3	1	4	0	1	0	0	6:41
05	Rains, April	2	4	0	1	1	1	0	0	0	1	5	2	1	0	1	10:25
TEAM REBOUNDS (INCLUDED IN TOTALS)		1															
TOTALS		13	21	0	1	4	7	4	8	12	6	30	7	9	0	6	80

TOTAL FG 1st HALF 7/11 63.6% 2nd HALF 6/10 60.0% GAME 13/21 61.9% DEADBALL
 3-POINT FG 1st HALF 0/0 0.0% 2nd HALF 0/1 0.0% GAME 0/1 0.0% REBOUNDS 2
 FREE THROWS 1st HALF 1/3 33.3% 2nd HALF 3/4 75.0% GAME 4/7 57.1%

OFFICIALS: Glenn Brown, Mickey Allen, D. Campbell-Alt
 Technicals: None

SCORE BY PERIODS

ROWAN COUNTY 7 12 = 19
 SOUTHERN 15 15 = 30

Attendance: 3,165

COMMENTS: POINTS OFF TURNOVERS

ROWAN COUNTY 6 SOUTHERN

SECOND CHANCE POINTS

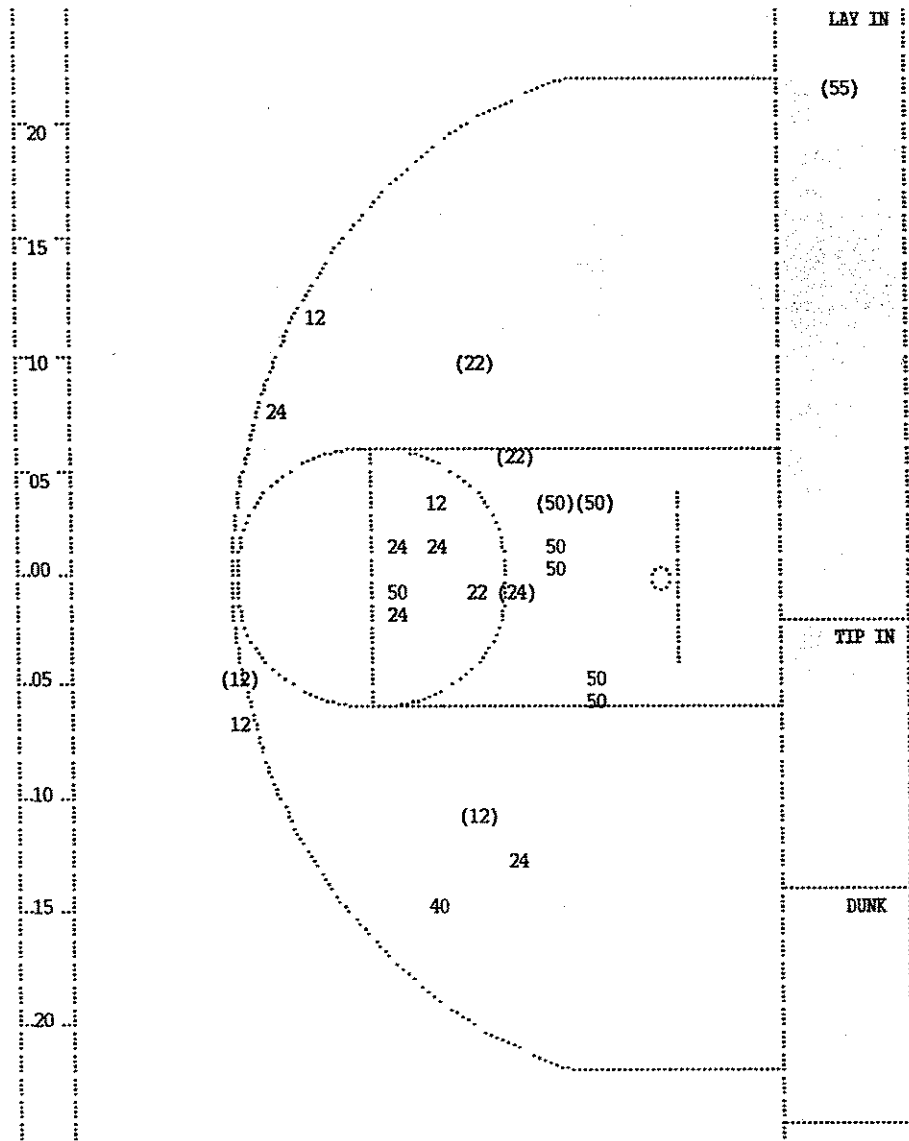
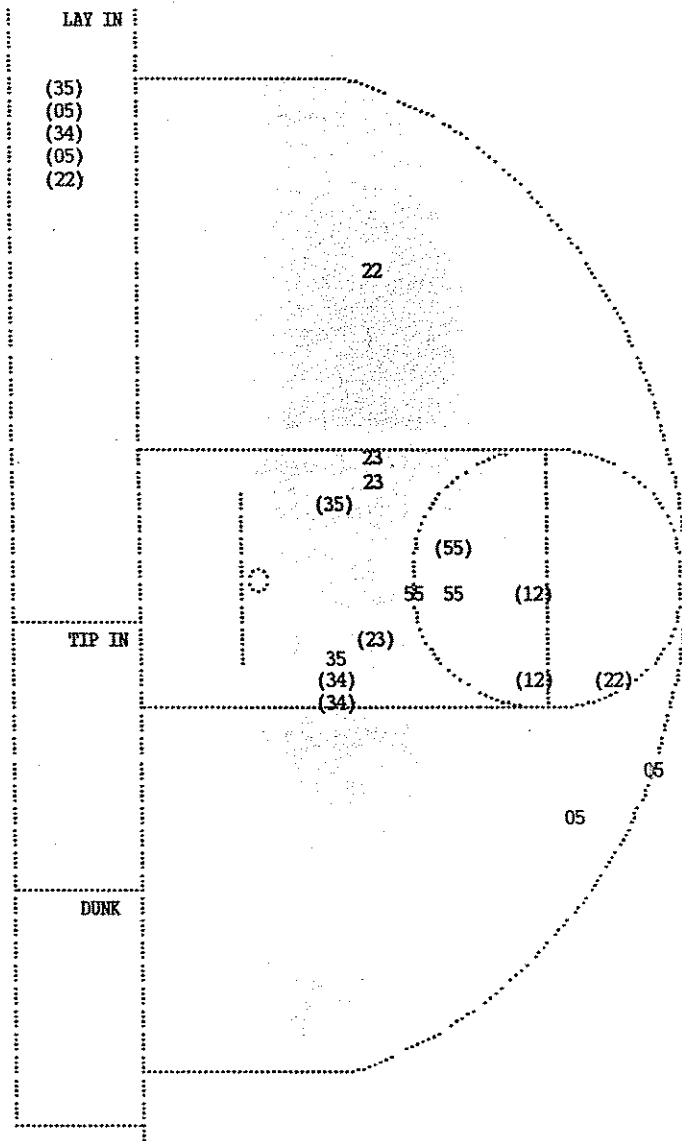
12 ROWAN COUNTY 2 SOUTHERN

2

Player	Team	SOUTHERN	Time	Score	ROWAN COUNTY	Player	Team				
Rains, April, Burden, Danielle, Allen, Sharonda, Carter, Lisa, Bleuel, Alicia Ball to Lady Trojans					Prince, Becky, Prince, Beth, Glover, Letisha, Martin, Heather, Pierce, Amy						
1	1	Bad Pass by Burden, Danielle	2 7:34		Steal by Glover, Letisha	1	1				
1	1	Foul on Carter, Lisa	2 7:34								
			2 7:33								
1	2	Traveling Violation on Allen, Sharonda	2 7:18		Out-of-Bounds by Prince, Beth	1	1				
			2 7:16								
1-1	100%	1-1	100%	Fast Break Layup by Carter, Lisa	2 7:15	15-9*	13 ft Left Side Jump shot by Prince, Beth	1-1	100%	1-1	100%
1	1	Assist by Rains, April	2 6:58	*17-9							
			2 6:45	17-11*	6 ft Lane Jump shot by Martin, Heather	1-1	100%	2-2	100%		
					Assist by Glover, Letisha	1	1				
1-1	100%	2-2	100%	12 ft Lane Jump shot by Burden, Danielle	2 6:33	*19-11					
					2 6:11						
					2 5:47	19-13*	8 ft Left Angle Fast Break by Prince, Beth	2-2	100%	3-3	100%
					2 5:37		Foul on Prince, Beth	1	1		
					2 5:37		Sub In: Russell, Ann Out: Prince, Beth				
					2 5:28		Steal by Glover, Letisha	2	2		
					2 5:28						
					2 5:27						
					2 5:19						
					2 5:16		Bad Pass by Pierce, Amy	1	3		
1-1	100%	3-4	75.0%	8 ft Lane Turnaround by Bleuel, Alicia	2 5:06	*21-13					
1	2	Assist by Burden, Danielle									
					2 4:53		Out-of-Bounds by Glover, Letisha	1	4		
					2 4:43		Foul on Russell, Ann	1	2		
2-2	100%	2-2	100%	Bleuel, Alicia, 2 Free Throws made both	2 4:43	*23-13					
1	2	Steal by Burden, Danielle			2 4:34						
					2 4:32		Dribbling Error on Prince, Becky	1	5		
1-2	50.0%	4-5	80.0%	Fast Break Layup by Rains, April	2 4:29	*25-13					
1	3	Assist by Bleuel, Alicia									
REB: 0 A: 3 BLK: 0 TO: 3 PF: 2 S: 2 FT: 2-2 100% FG: 4-5 80.0%					TIME - O U T ROWAN COUNTY No. 1		REB: 1 A: 1 BLK: 0 TO: 5 PF: 2 S: 2 FT: 0-0 00.0% FG: 3-3 100%				
				Sub In: Schaber, Christy Out: Carter, Lisa	2 4:18						
				Foul on Burden, Danielle	2 4:07						
1-1	100%	5-6	83.3%	Fast Break Layup by Schaber, Christy	2 4:07	25-14*	Glover, Letisha, 2 Free Throws made 1st missed 2nd	1-2	50.0%	1-2	50.0%
2	4	Assist by Rains, April			2 4:00	*27-14					
					2 3:39	27-17*	3 pt 20 ft Circle Jump shot by Prince, Becky	1-1	100%	4-4	100%
							Assist by Martin, Heather	1	2		
					2 3:08						
					2 3:07		Forced by defense Martin, Heather	1	6		
					2 3:03		Foul on Russell, Ann	2	3		
					2 3:03						
3-4	75.0%	3-4	75.0%	Sub In: Smith, Angie Out: Allen, Sharonda	2 3:03	*28-17					
				Bleuel, Alicia, 2 Free Throws missed 1st made 2nd	2 3:03	*28-17					
					2 2:43	28-19*	6 ft Lane Jump shot by Glover, Letisha	1-1	100%	5-5	100%
							Assist by Pierce, Amy	1	3		
1-1	100%	6-9	66.6%	4 ft Lane Turnaround by Smith, Angie	2 2:27	*30-19					
1	5	Assist by Schaber, Christy									
					2 1:43		Traveling Violation on Pierce, Amy	2	7		
					2 1:19						
					2 1:07		Traveling Violation on Pierce, Amy	3	8		
					2 :59.1						
					2 :58.3		Steal by Glover, Letisha	3	3		
					2 :48.5						

Player	Team	SOUTHERN	Time	Score	ROWAN COUNTY	Player	Team
1	4	Foul on Smith, Angie	2 :02.3				
			2 :02.3		Martin, Heather, 1 Free Throw missed	0-1	00.0% 1-3 33.3%
			2 :01.6		Martin, Heather, 1 Free Throw missed	0-2	00.0% 1-4 25.0%
D-3	Tot-3	D-4	Tot-5	Rebound by Bleuel, Alicia	2 :00.0		

Player	Team	SOUTHERN	Time	Score	ROWAN COUNTY	Player	Team
Carter, Lisa, Bleucl, Alicia, Allen, Sharonda, Burden, Danielle, Schaber, Christy					Glover, Letisha, Pierce, Amy, Martin, Heather, Prince, Becky, Prince, Beth		
			1 7:43		Ball to Lady Vikings		
			1 7:14		Out-of-Bounds by Pierce, Amy	1	1
			1 7:14		Steal by Glover, Letisha	1	1
			1 7:11				
			1 7:02	0-2*	4 ft Lane Bank by Martin, Heather	1-1	100% 1-2 50.0%
					Assist by Prince, Beth	1	1
			1 6:38	*2-2			
			1 6:29				
			1 6:29	2-3*	Pierce, Amy, 2 Free Throws missed 1st made 2nd	1-2	50.0% 1-2 50.0%
			1 5:58		Foul on Prince, Becky	1	1
			1 5:26				
			1 5:25		Unforced Error Prince, Beth	1	2
			1 5:14	*4-3			
			1 4:28	*6-3			
			1 4:04		Foul on Prince, Beth	1	2
			1 3:50		Foul on Pierce, Amy	1	3
			1 3:49				
			1 3:38		Traveling Violation on Prince, Beth	2	3
			1 3:38				
			1 3:27				
			1 3:10	6-5*	Driving Layup by Pierce, Amy	1-1	100% 2-8 25.0%
					Assist by Glover, Letisha	1	2
			1 2:57	*8-5			
			1 2:25				
			1 2:25				
			1 1:51	*10-5			
			1 1:15	10-7*	13 ft Right Side Jump shot by Prince, Becky	1-3	33.3% 3-14 21.4%
					Assist by Prince, Beth	2	3
			1 :59.1	*12-7			
			1 :40.8				
			1 :39.5		Bad Pass by Pierce, Amy	2	4
			1 :39.5	*14-7			
			1 :39.5		Foul on Prince, Beth	2	4
			1 :39.5	*15-7			
			1 :00.2				
			1 :00.2		Dribbling Error on Prince, Becky	1	5



SOUTHERN					
Player			Player		
34 - Carter, Li	3 / 3	100.0%	05 - Rains, Apr	2 / 4	50.0%
55 - Bleuel, Al	1 / 3	33.3%	35 - Smith, Ang	2 / 3	66.6%
23 - Allen, Sha	1 / 3	33.3%			
12 - Burden, Dan	2 / 2	100.0%			
22 - Schaber, Ch	2 / 3	66.6%			
Layups	1-9 Ft	10-15 Ft	Over 15 Ft	3 Pointers	Total
5 / 5	5 / 10	2 / 3	1 / 2	0 / 1	13 / 21
100.0%	50.0%	66.7%	50.0%	0.0%	61.9%

ROWAN COUNTY					
Player			Player		
24 - Glover, Le	1 / 6	16.6%	40 - Russell, A	0 / 1	0.0%
55 - Pierce, Am	1 / 1	100.0%			
50 - Martin, He	2 / 7	28.5%			
12 - Prince, Be	2 / 5	40.0%			
22 - Prince, Be	2 / 3	66.6%			
Layups	1-9 Ft	10-15 Ft	Over 15 Ft	3 Pointers	Total
1 / 1	4 / 9	2 / 8	0 / 1	1 / 4	8 / 23
100.0%	44.4%	25.0%	0.0%	25.0%	34.8%